

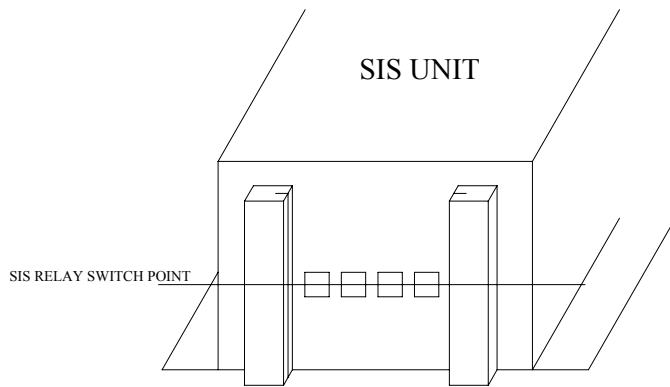
Shaft layout using magnets (MSL=00)

FIXING OF SIS MAGNETS TO STEEL TAPE

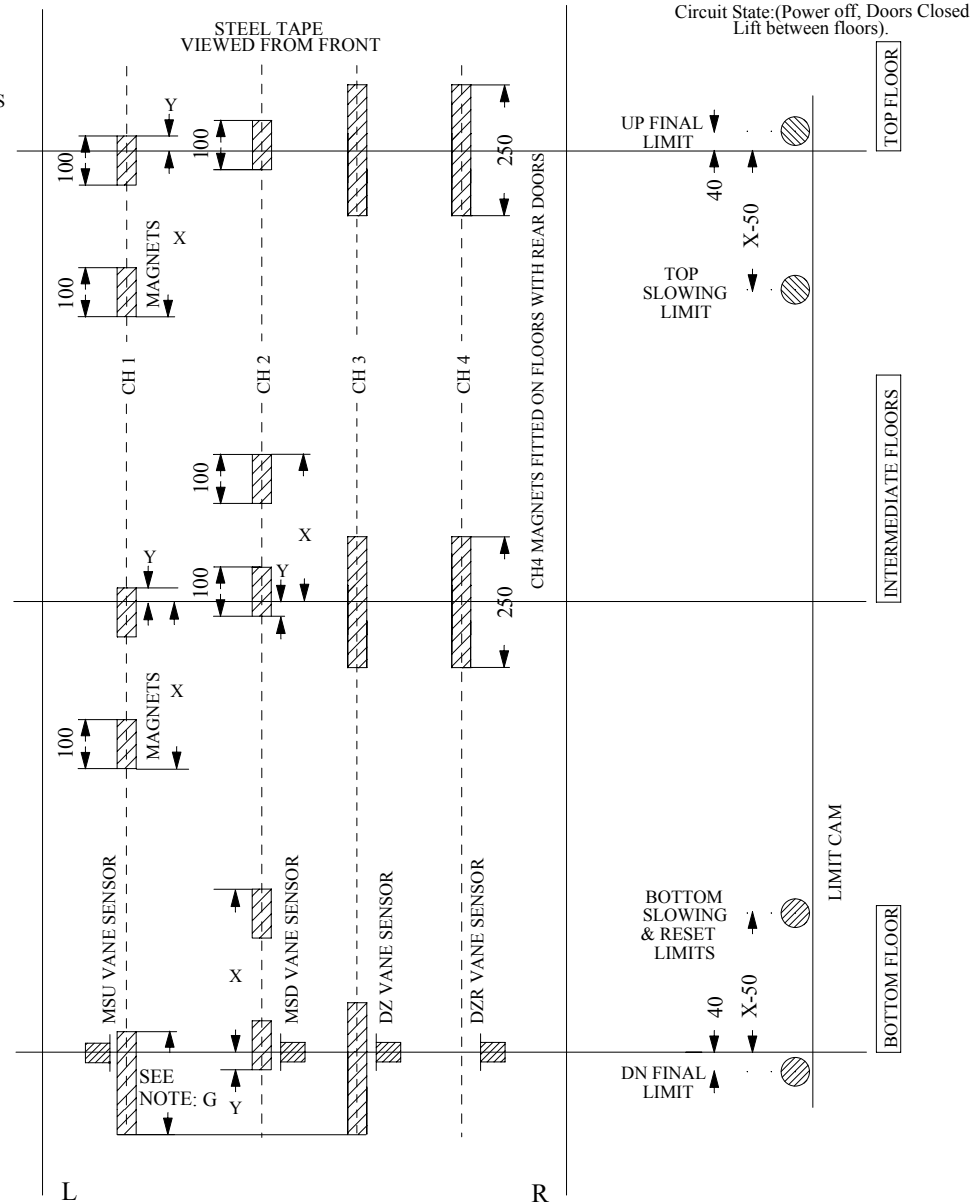
- STEP 1: INSTALL THE STEEL TAPE PERFECTLY PLUMB IN THE LIFT SHAFT USING THE SUPPLIED HARDWARE.
- STEP 2: AFTER INSTALLATION OF THE STEEL TAPE REMOVE ALL DIRT AND OIL FROM THE TAPE.
- STEP 3: TEMPORARILY ATTACH THE MAGNET STRIPS TO THE STEEL TAPE WITHOUT REMOVING THE BACKING PAPER FROM THE ADHESIVE TAPE OF THE MAGNETS.
- STEP 4: AFTER COMPLETION OF THE FINAL FLOOR AND SLOWING ADJUSTMENTS, THE MAGNETS CAN BE PERMANENTLY FIXED TO THE STEEL TAPE. THIS IS ACHIEVED BY REMOVING THE BACKING PAPER FROM THE DOUBLE ADHESIVE TAPE ON THE MAGNETS AND (USING THE SETTING GAUGE) FIRMLY PRESSING THE MAGNETS TO THE STEEL TAPE.

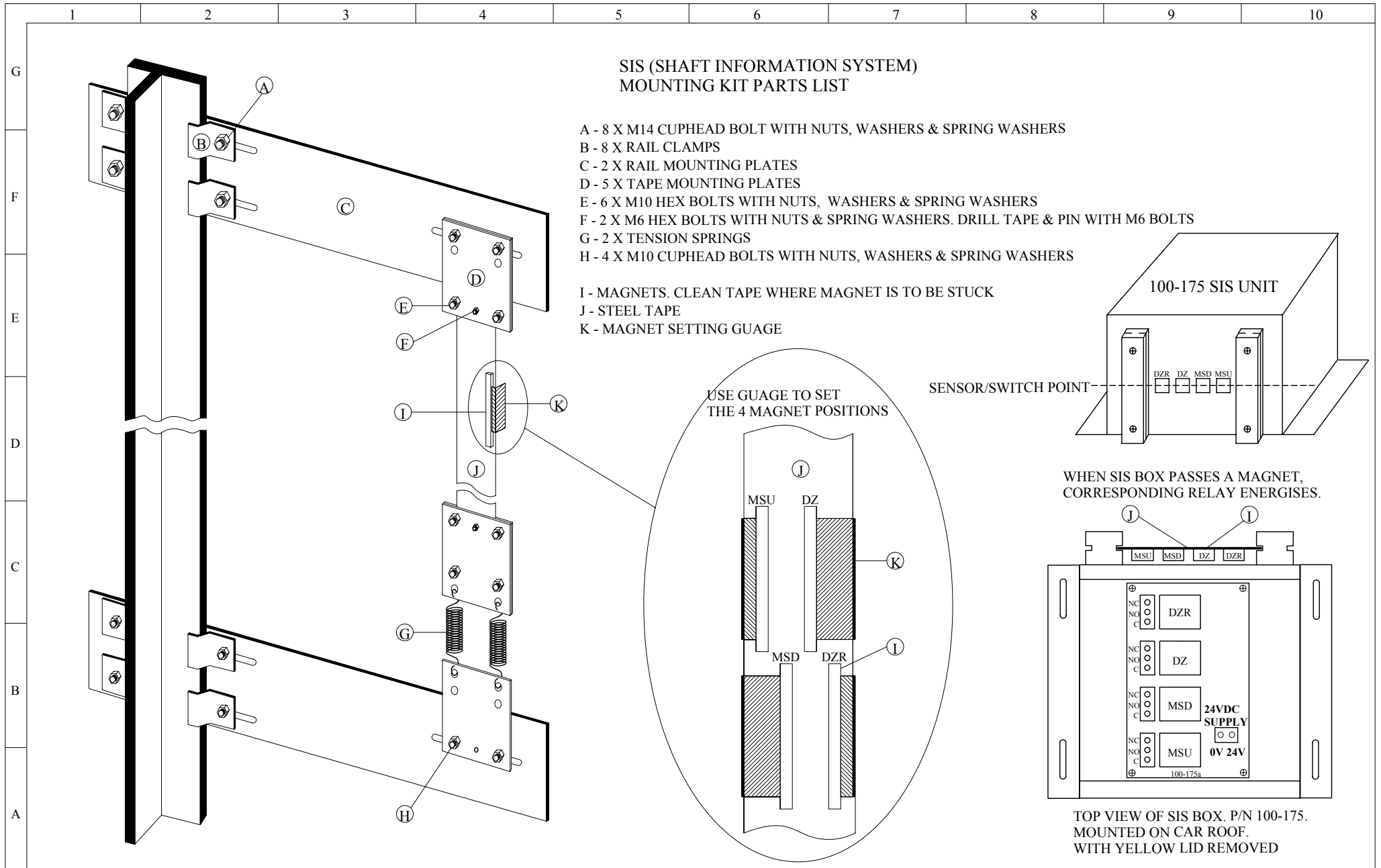
INDICATIVE DIMENSIONS

m/sec	X	Y
0.50	500	25
0.75	900	25
1.00	1300	25
1.50	2400	25



- NOTE:
- A: VANES IN BETWEEN FLOORS MAY OVERLAP
 - B: DZ MUST OVERLAP MSU AND MSD SENSORS AT FLOOR LEVELS
 - C: LIFT ADVANCED COUNT OF MSU (UP), MSD (DN) BETWEEN FLOORS
 - D: WHEN LIFT IS AT FLOOR LEVEL BOTH MSU, MSD & DZ MUST BE OPERATED
 - E: ON RESET OR OUT OF STEP LIFT WILL SLOW ON TOP OR BOTTOM SLOWING LIMIT SWITCH
 - F: RELEVELLING INITIATES WHEN LIFT IS IN RELEVELLING ZONE, DZ & MSD OR MSU ARE DE-ENERGISED. MSD UP, MSU DOWN RELEVELLING STOPS WHEN MSD & MSU ARE ENERGISED.
 - G: MSU & DZ MUST REMAIN OPERATIVE WHEN LIFT IS ON BUFFER
 - H: BOTTOM SLOWING LIMIT MUST REMAIN OPERATED WHEN LIFT IS ON BUFFER
 - I: MSD & DZ MUST REMAIN OPERATIVE WHEN COUNTERWEIGHT LANDED
 - J: TOP SLOWING LIMIT MUST REMAIN OPERATED WHEN COUNTERWEIGHT LANDED



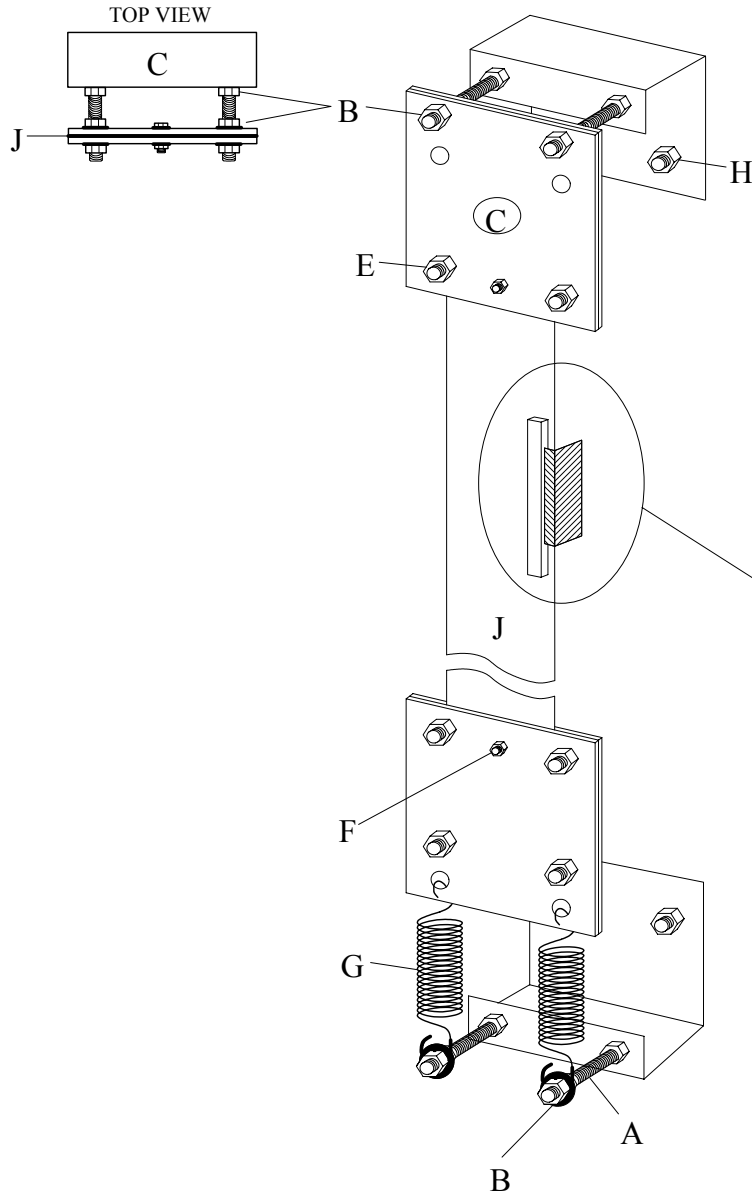


Revision:	CHANGES	DATE:	SIGN:	Job No:	Drawing No: SIS Rail Mounting Kit Info
A				Drawn	SIS Control System
B				APP	
C				Rev:	Date 13-06-06
					SHEET 1 OF 1

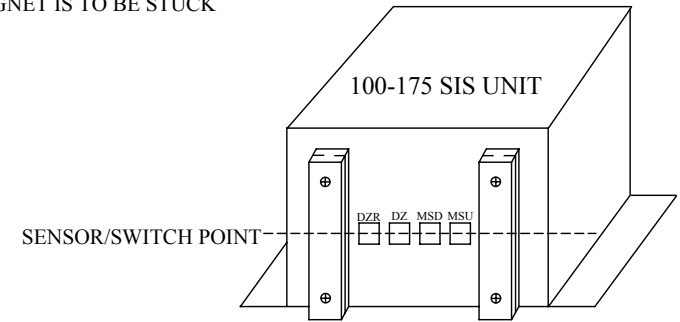
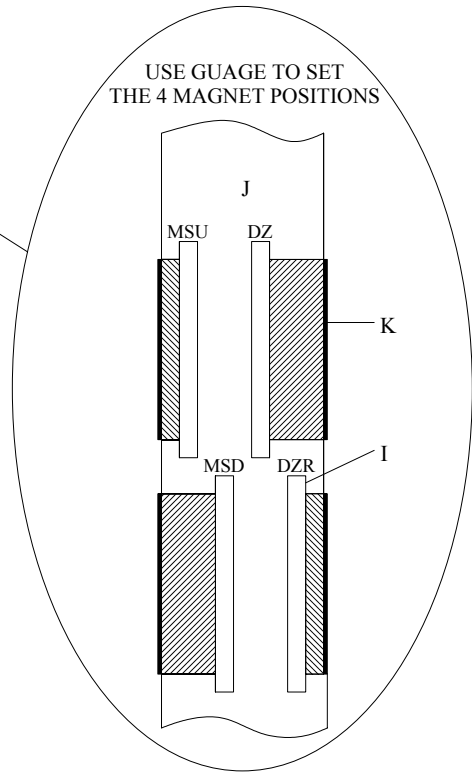
SIS (SHAFT INFORMATION SYSTEM) WALL MOUNTING KIT INFO & PARTS LIST

SEE ALSO, PAGE 5 OF CIRCUIT DIAGRAMS FOR MAGNET LAYOUT

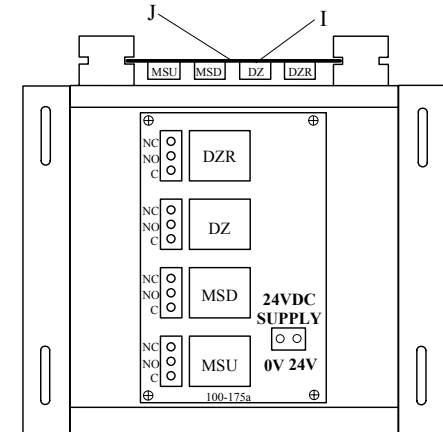
- A - 4 X M12 THREADED ROD
- B - 16 X M12 NUTS AND WASHERS
- C - 2 X WALL MOUNTING BRACKETS
- D - 4 X TAPE MOUNTING PLATES
- E - 6 X M10x25mm HEX BOLTS WITH NUTS, WASHERS & SPRING WASHERS
- F - 2 X M6 HEX BOLTS WITH NUTS & SPRING WASHERS. DRILL TAPE & PIN WITH M6 BOLTS
- G - 2 X TENSION SPRINGS
- H - 4 X M12 DYNABOLTS
- I - MAGNETS. CLEAN TAPE WHERE MAGNET IS TO BE STUCK
- J - STEEL TAPE
- K - MAGNET SETTING GAUGE



USE GAUGE TO SET
THE 4 MAGNET POSITIONS



WHEN SIS BOX PASSES A MAGNET,
CORRESPONDING RELAY ENERGISES.



TOP VIEW OF SIS BOX. P/N 100-175.
MOUNTED ON CAR ROOF.
WITH YELLOW LID REMOVED

Revision:	CHANGES	DATE:	SIGN:	Job No:	Drawing No: SIS Wall Mounting Kit Info
A				Drawn	SIS Control System
B				APP	
C				Rev:	
				Date	13-06-06
					SHEET 1 OF 1