

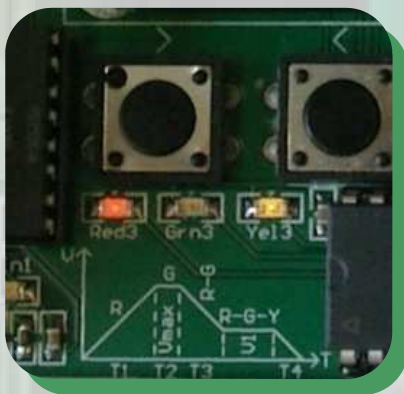
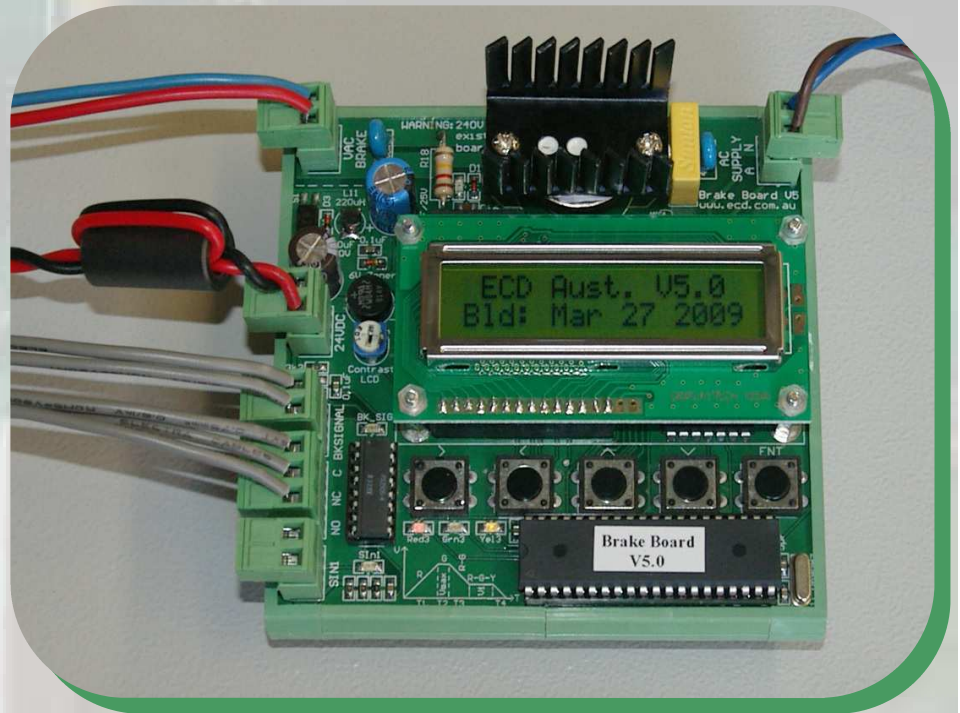


ECD Brake Board

The brake board is specifically designed to control elevator machine brakes and door cams across a wide range of voltages and loads.

By controlling the voltage and timing of the brake lift and drop, a smooth, quiet and efficient operation can be achieved.

By reducing voltage gradually during the brake drop phase, large, dangerous "back EMF" surges are avoided.



For easy installation, the Brake Board is mounted in a plastic housing, to suit 35mm DIN rail

The following adjustable parameters are used to optimize the brake operation

- ◆ Brake lift time (**T1**) to max voltage (**Vmax**). Time at Vmax before dropping to cooling voltage (**T2**).
- ◆ Time (**T3**) to drop from Vmax to the reduced cooling voltage (**V1**).
- ◆ Brake drop time to 0 Volts (**T4**).



For more information on the Brake Board please visit our website; Products / Brake Board.

www.ecd.com.au