

DISPLAY PROGRAMMER INSTALLATION

The Display programmer is used to program the ECD range of Dot Matrix indicators.

ECD displays use two different micro-controllers, Ver1 & Ver2. Ver 2 is the current microprocessor.

To program Ver 1 displays you will need to use the “Displays V1” programmer and for Ver 2 displays you will need to use the “Displays V2” programmer. See Fig 1 & 2.

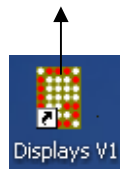
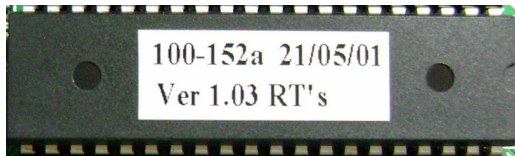


Fig. 1



Fig. 2

Please follow the steps below to install both V1 & V2 Displays Programmers:

Nb: If you already have “Displays V1” program installed on your PC, you will only need to drag and drop “Displays V2” from the CD. Therefore, do not click “Install” at step 2. Instead click “CD Browse” as per step 3.

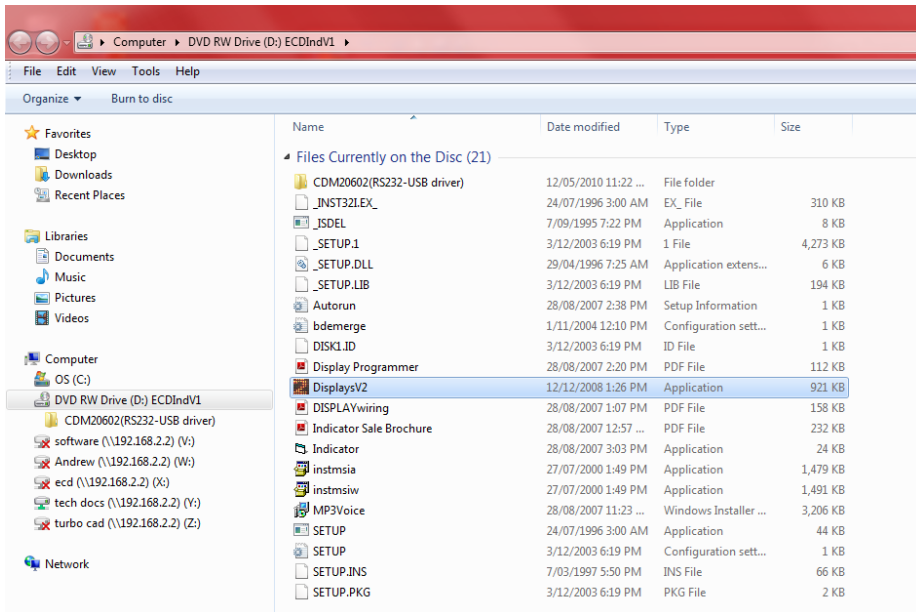
1. Insert “Display Programmer V1&2” CD into the computer CD Drive.
2. On “ECD Indicator Programmer Setup Launcher”, click on “Install” button and follow prompted instructions to install the program

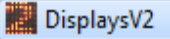


At this moment, the “Displays V1” will be installed.

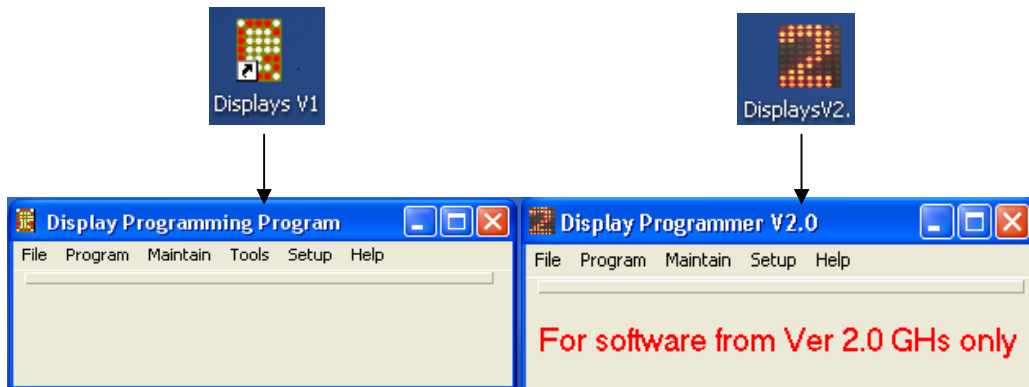
DISPLAY PROGRAMMER INSTALLATION

3. To locate the “Displays V2”, go back to step 2 and click “CD Browse” button:



On the CD explore window, left click to select then drag  file to the computer desktop.

4. Double click to any relevant programmer icon on the computer desktop (see Fig. 1 & 2) to run. The programmer will appear as below and ready to use:



Important:

1. A programming dongle, ECD Part# 100-159, is required to interface the display to the PC.
2. Only open each programmer at a time.
3. Both programmers shall access to the same library in the installation folder.